

*Add Ambiance to Your
Outdoor Room or Backyard!*



Everglow
GAS LAMPS & TORCHES

GAS FIRED
TORCHES & LAMPS

DISTINCTIVE OUTDOOR LIGHTING SOLUTIONS

EVERGLOW LAMPS & TORCHES COMBINE DISTINCTIVE STYLE, THE LATEST TECHNOLOGY & QUALITY MATERIAL.

Everglow lamps and torches are built to last with solid all-aluminum bodies that stand up to the outdoor environment

Everglow Gas Lamps & Torches Add Reliability, Function and Elegance... to Homes or Businesses:

- Maximum eye appeal both night or day.
- Increase safety and security.
- Natural glow of light even during power outages.
- Adds distinctive styling to any landscape or architecture.
- Yellow spectrum of light does not attract insects.

Beautiful Durable Finish

Strict control is maintained throughout production. Protective measures ensure that the beauty of each lamp and torch endures. The textured black powder-coat finish delivers the look and durability you expect.

Heat-Treated Glass Panes

- The finest glass available, bringing the lamps to life when lighted.
- Remove easily for cleaning.

Cast Aluminum Construction

- Thick-walled solid cast aluminum provides greater strength, durability and finish quality.
- Non corrosive construction will not rust.

Aluminum Post

- Non corrosive construction will not rust.

GAS LAMP BURNERS



Standard Dual Inverted Burner



Optional Upright Burner



Optional Open Flame Burner

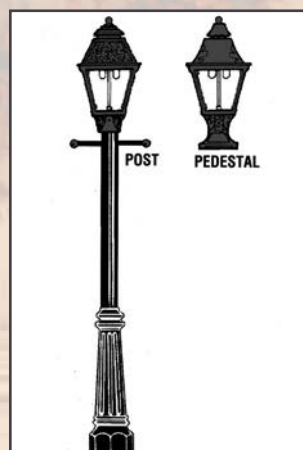
Dual inverted burner system.

- Proven for maximum light, dependability and energy efficiency. Approx. 2,500 BTU/hr.
- Available in Natural or LP gas.

Optional Burners

Everglow Gas Lamps are easily converted to the upright or open flame burners, creating a dramatic effect during the holidays or special occasions.

MOUNTING OPTIONS



POST MOUNTS



HK1A-N Black (Natural Gas)
HK1A-P Black (LP Gas)
HK1A-E Black (Electronic)
 22" High x 10-3/4" Wide
 Shipping Wt. 13 lbs.



GG2A-N Black (Natural Gas)
GG2A-P Black (LP Gas)
GG2A-E Black (Electronic)
 22" High x 10-3/4" Wide
 Shipping Wt. 13 lbs.



HJ3A-N Black (Natural Gas)
HJ3A-P Black (LP Gas)
HJ3A-E Black (Electronic)
 22" High x 10-3/4" Wide
 Shipping Wt. 13 lbs.



WK5A-N Black (Natural Gas)
WK5A-P Black (LP Gas)
WK5A-E Black (Electronic)
 23" High x 14" Wide
 Shipping Wt. 17 lbs.



VK7A-N Black (Natural Gas)
VK7A-P Black (LP Gas)
VK7A-E Black (Electronic)
 24" High x 13-1/2" Wide
 Shipping Wt. 17 lbs.



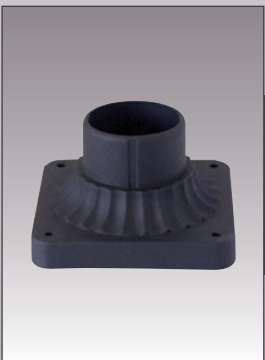
DPB Black
 Cast Aluminum decorative enclosure
 is designed in two pieces for easy
 installation around existing 3" OD
 in-ground post.



Dual Inverted Burner System

- Proven for maximum light, dependability and energy efficiency. Approx. 2,500 BTU/hr.
- Available in Natural or LP gas.

PEDESTAL MOUNTS



PEDBASE
 3-1/2" High x 5-7/8" Wide
 Shipping Wt. 1 lbs.

Base can be used to
 convert any post
 mount lamp head
 into a pedestal mount.



HK1A Black
 Shown mounted to PEDBASE

See Everglow's Price
 List for a complete line
 of accessories and
 replacement parts
 for most major brands.

ALL MODELS
 AVAILABLE IN ELECTRIC

TORCH HEADS

Bring the party to life with solid cast aluminum torch heads fired with gas.

Island-inspired torches lend tropical romance to outdoor festivities. A distinctive, glamorous atmosphere for homes, commercial establishments, parks and scenic drives... with gas. The beauty of open flame Luau torches serves a dual purpose. They provide a distinctive lighting effect for evening outdoor entertaining and they discourage the intrusion of insects and other pests that every outdoor entertainment area can do without.



THE POLYNESIAN

- No rust solid cast aluminum
- Durable electrostatic powder-coated finish
- Solid brass control valve and burner
- Brass on/off key
- Available in Natural or LP Gas
- 1 year limited warranty

PT2-N

PT2-P

9" High x 6" Wide
Shipping Wt. 5 lbs.



THE FLOWER

- No rust solid cast aluminum
- Durable electrostatic powder-coated finish
- Solid brass control valve and burner
- Brass on/off key
- Available in Natural or LP Gas
- 1 year limited warranty

FT2-N

FT2-P

11-1/2" High x 11" Wide
Shipping Wt. 8.5 lbs.



GAS TORCH COMBO-PAK

Includes torch head with on/off key, post with copper tubing and electronic ignition for fast starts with a push of a button.

Available for In-ground or Deck/Patio installation.



In-ground Installation



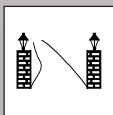
Deck/Patio Installation

APPLICATIONS



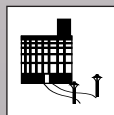
RESIDENTIAL

Front/Back yard
Entry way
Landscape
Outdoor cooking area
Deck/Patio
Pool area



SUBDIVISIONS

Street lighting
Entry way



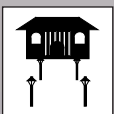
INDUSTRIAL

Entry way
Landscape



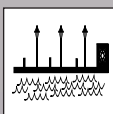
RESTAURANT

Landscape
Entry way
Outdoor eating area



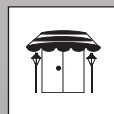
MUNICIPAL

Street lighting
Town Square



MARINA

Docks
Landscape
Outdoor eating area



COUNTRY CLUB

Outdoor cooking area
Pool area
Outdoor landscape



HOTEL / MOTEL

Landscape
Pool area



LAMP :: DECK/PATIO INSTALLATION COMBO-PAK (Includes Open Flame Head, Base, Post with Copper Tubing and Ignition System)

PART NO.	LAMP HEAD	GAS TYPE	COLOR	POST LGTH	SHIP WT.
HKP-NO	HK Series	Natural	Black	6'5"	32 lbs
HKP-PO	HK Series	Propane	Black	6'5"	32 lbs
GGP-NO	GG Series	Natural	Black	6'5"	32 lbs
GGP-PO	GG Series	Propane	Black	6'5"	32 lbs
HJP-NO	HJ Series	Natural	Black	6'5"	32 lbs
HJP-PO	HJ Series	Propane	Black	6'5"	32 lbs

LAMP :: IN-GROUND INSTALLATION COMBO-PAK (Includes Open Flame Head, Post with Copper Tubing and Ignition System)

PART NO.	LAMP HEAD	GAS TYPE	COLOR	POST LGTH	SHIP WT.
HKG-NO	HK Series	Natural	Black	7'9"	27 lbs
HKG-PO	HK Series	Propane	Black	7'9"	27 lbs
GGG-NO	GG Series	Natural	Black	7'9"	27 lbs
GGG-PO	GG Series	Propane	Black	7'9"	27 lbs
HJG-NO	HJ Series	Natural	Black	7'9"	27 lbs
HJG-PO	HJ Series	Propane	Black	7'9"	27 lbs

TORCH :: DECK/PATIO INSTALLATION COMBO-PAK (Includes Torch, Base, Post with Copper Tubing and Ignition System)

PART NO.	GAS TYPE	BTU	COLOR	SIZE	POST LGTH	SHIP WT.
THE POLYNESIAN						
PPBL-N	Natural	14,000	Black	9" x 6"	6'5"	21 lbs
PPBL-P	LP	14,000	Black	9" x 6"	6'5"	21 lbs
THE FLOWER						
PFBL-N	Natural	26,000	Black	11-1/2" x 11"	6'5"	24.5 lbs
PFBL-P	LP	26,000	Black	11-1/2" x 11"	6'5"	24.5 lbs

TORCH :: IN-GROUND INSTALLATION COMBO-PAK (Includes Torch, Post with Copper Tubing and Ignition System)

PART NO.	GAS TYPE	BTU	COLOR	SIZE	POST LGTH	SHIP WT.
THE POLYNESIAN						
GPBL-N	Natural	14,000	Black	9" x 6"	7'9"	16 lbs
GPBL-P	LP	14,000	Black	9" x 6"	7'9"	16 lbs
THE FLOWER						
GFBL-N	Natural	26,000	Black	11-1/2" x 11"	7'9"	19.5 lbs
GFBL-P	LP	26,000	Black	11-1/2" x 11"	7'9"	19.5 lbs

BASES AND POSTS

PART NO.	COLOR	MATERIAL	INTERNALS	DIMENSIONS	SHIP WT.
DECK/PATIO BASES – Fits 3" OD Post					
DPB	Black	Aluminum	N/A	24" Tall	11 lbs
ABA	Black	Aluminum	N/A	15" Diameter	5 lbs
PEDESTAL BASE					
PEDBASE	Black	Aluminum	N/A	5-7/8" x 5-7/8"	1 lbs
POST WITH & WITHOUT INTERNALS — Ladder Rest Sold Separately					
POBA	Black	Aluminum	None	3"OD 7'9" Long	9 lbs
POBAI	Black	Aluminum	Copper	3"OD 7'9" Long	9.5 lbs
POB6A	Black	Aluminum	None	3"OD 6' Long	7.5 lbs
POB6AI	Black	Aluminum	Copper	3"OD 6' Long	8 lbs
POB10A	Black	Aluminum	None	3"OD 10' Long	12 lbs
POB10AI	Black	Aluminum	Copper	3"OD 10' Long	12 lbs



1ST IN OUTDOOR GAS GRILLS

1ST IN RESIDENTIAL OUTDOOR GAS LIGHTING

1ST IN AFTER MARKET REPLACEMENT PARTS

GAS LAMP & TORCH LIMITED WARRANTY

Modern Home Products Corp. extends a 30 day warranty on paint and glass. There is a 1- year warranty from date of purchase against manufacturing defects in material and workmanship to the original purchaser of this product if used for home use within the United States. Due to their delicate nature there is no warranty on mantles. If this product fails to operate because of a manufacturing defect, the defective part will be repaired or replaced by Modern Home Products Corp. if the defective part, along with proof of purchase is returned to the original place of purchase, or returned postage paid to:

Modern Home Products Corporation
150 South Ram Road
Antioch, Illinois 60002

Service, labor and transportation costs are not covered by this warranty. This warranty does not cover defects caused by accidental damage, improper handling, installation, or repairs made by unauthorized persons, and specifically excludes liability for indirect, incidental or consequential damage to the property. Some states do not allow the exclusion of consequential damage, so the above exclusions or limitations may not apply to you. This warranty gives you specific rights and you may also have other rights which may vary from state to state.

Modern Home Products Corporation

150 South Ram Road • Antioch, IL 60002

Phone: (888) 647.4745 • (847) 395.6556

Fax: (800) 637.2918 • (847) 395.9121

www.mhpgrills.com • email: info@mhpgrills.com



mhpgrills.com



profiregrills.com



newphoenixgrills.com



BravoKamadoGrill.com



This literature may not be copied, photocopied, reproduced, translated or published in any electronic or machine-readable form, in whole or in part, without prior written approval of Modern Home Products Corp.

MHP configuration is a trademark of Modern Home Products Corporation. Prices and specifications subject to change without notice.

©2011-2015 Modern Home Products Corporation.

Part #GELI 1/15 Printed in U.S.A.