

# Natural Gas Today



MIDDLE TENNESSEE  
NATURAL GAS  
UTILITY DISTRICT  
www.mtng.com



Volume 13, Issue 4 - December, 2016

## Winter Natural Gas Supplies and Prices 2016 – 2017

The natural gas market continues its multi-year trend of **stable, historically low rates** for you, our customers. Current rates are a small fraction (1.7%) higher than they were last November, but they are far below rates of prior years. You continue to enjoy a large, competitive advantage over your neighbors who use electric or propane to heat their water, dry their clothes, or heat their homes.

Nationally, natural gas supplies are strong, with quantities of natural gas stored for winter-use nearing all-time high levels as I write this article. Similarly, MTNG has strong storage balances and contractual supply commitments for use during the upcoming winter.

One item to note about energy usage and energy bills is that last winter was one of the warmest winters we have experienced in Middle Tennessee (following two colder than normal winters). We anticipate and assume that 2016-2017 will produce closer to normal winter weather. This in turn will mean higher energy usages by all customers and corresponding higher energy bills than those experienced in 2015-2016.

Middle Tennessee Natural Gas Utility District is all about serving you. As we say in our Mission Statement, "Providing Safe, Reliable, and Competitive Natural Gas Service." If we can help you with your energy needs in any way, please come by or call us.

Have a great winter,  
Jim Hodges, *Executive Vice President & CEO*

### Middle Tennessee Natural Gas Utility District

Rates Effective November 1, 2016:

#### Residential:

Customer Charge.....\$ 7.00 / month  
All Gas.....\$ 0.815 per therm

#### Small Commercial:

Customer Charge .....\$ 16.00 / month  
All Gas .....\$ 0.825 per therm

MIDDLE TENNESSEE AREA		
AVERAGE PRICE		
as of November 2016		
FUEL		PRICE PER MILLION BTUs
Natural Gas	\$0.815 / therm Plus a \$7/month Customer Charge	\$ 8.15
Electricity	\$0.094 / kwh Plus a monthly Customer Charge	\$ 27.54
Propane	\$1.750 / gallon	\$ 19.06
Kerosene	\$4.339 / gallon	\$ 32.14
Gasoline	\$2.299 / gallon	\$ 18.39



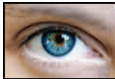
Know what's below.  
Call before you dig.

The number one cause of natural gas emergencies is damage by a third party. Before **any** excavation, you must call Tennessee One Call at **811** to have utilities located and marked. It is smart, free, and **it is the law**. Please do not dig carelessly near gas pipelines. Call before you dig, wait to have the lines marked, respect the markers, and dig with care.

### KNOW THE FACTS TO RECOGNIZE AND REACT

From start to finish, natural gas is the safest, most reliable and efficient energy available. Though natural gas incidents are very uncommon, you should know telltale signs and what to do when faced with them.

#### LOOK



Blowing dirt, bubbling water, dry spots in moist areas, or dead vegetation may indicate a gas leak.

#### LISTEN



A hissing sound near a natural gas pipeline or an appliance may indicate a leak.



#### SMELL

Natural gas has a unique odor added to it so you can be aware of a leak through your sense of smell long before there is any danger.



#### If you suspect a gas leak, TAKE ACTION:



**LEAVE IMMEDIATELY** – Do not try to find or stop the leak. Get to a safe area.



**MINIMIZE POTENTIAL SOURCES OF IGNITION** – Do not touch anything electrical. Do not smoke, use phones, turn appliances or lights on or off, or operate any equipment that could spark.



**CALL** – Once you are out of the area where a gas leak is suspected, call Middle Tennessee Natural Gas to investigate.

#### FOR ADDITIONAL INFORMATION

To learn more, you can phone your local MTNG office or visit us at [www.mtnng.com](http://www.mtnng.com).

For More Information regarding the Underground Damage Prevention Law, please visit:  
[www.tenn811.com](http://www.tenn811.com)